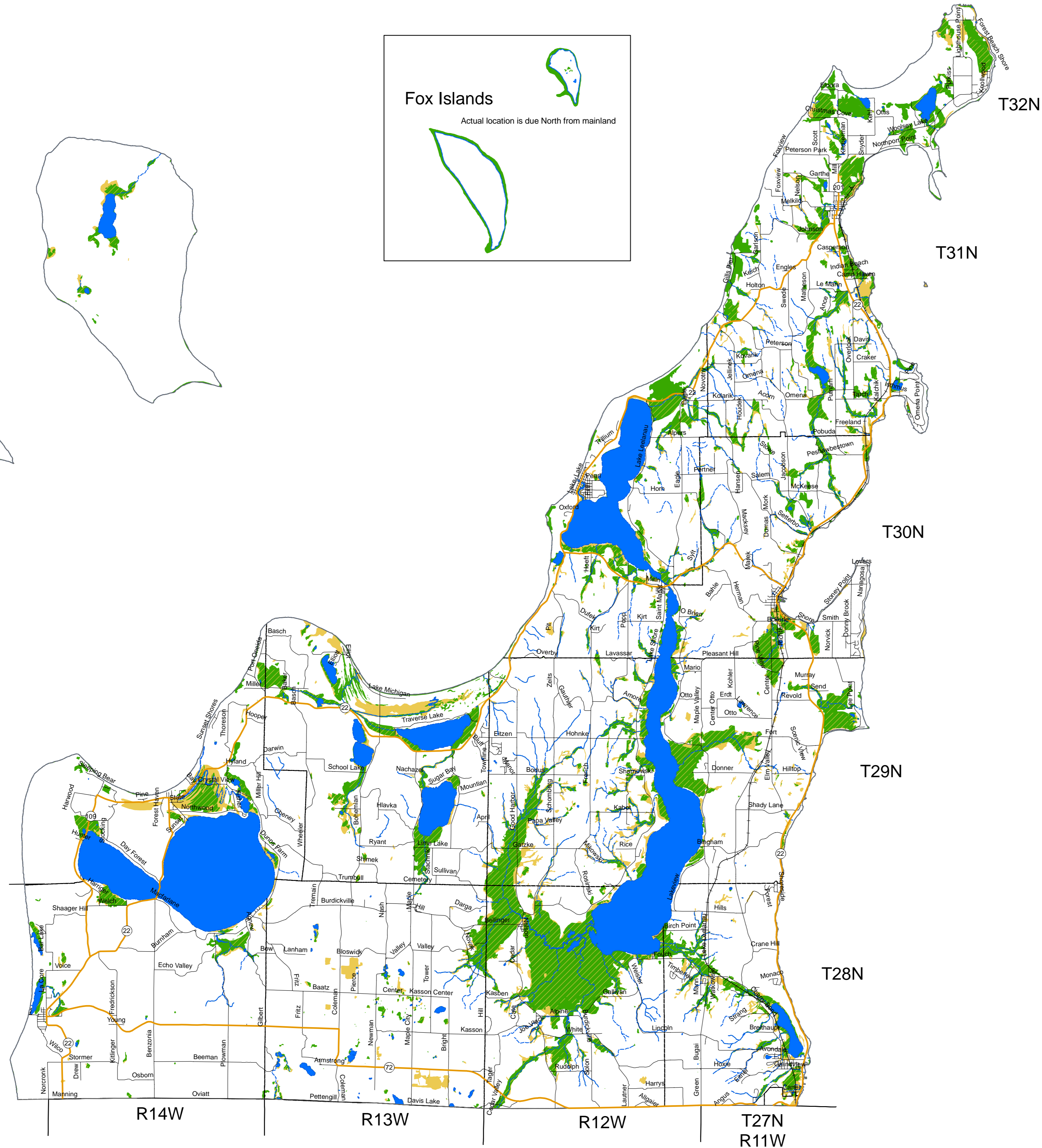
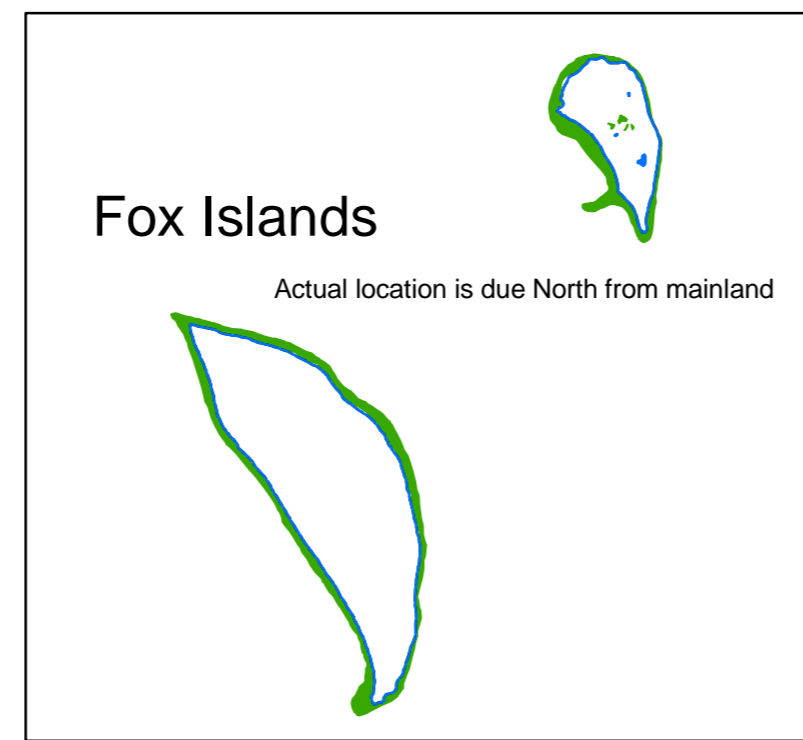
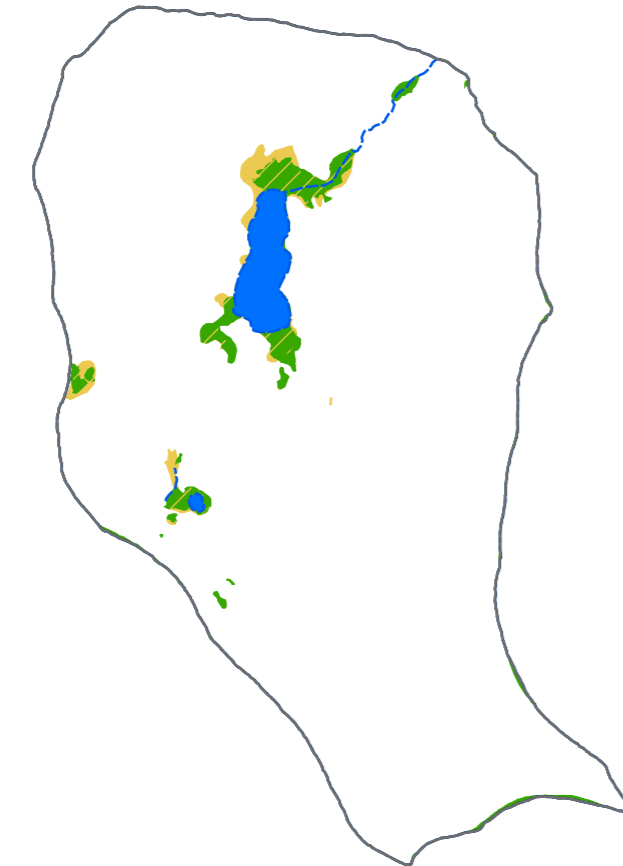
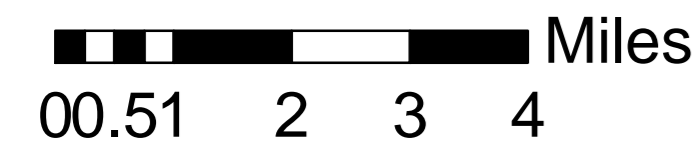
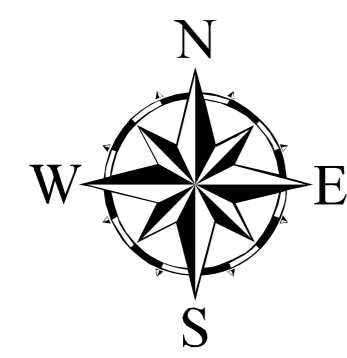


# Leelanau County Final Wetland Inventory



## Leelanau County Final Wetland Inventory

This Michigan Department of Environmental Quality (MDEQ) Wetland Inventory Map is intended to be used as one tool to assist in identifying wetlands and provides only potential and approximate location of wetlands and wetland conditions. The MDEQ produced this map from the following data obtained from other agencies or organizations:

1. The National Wetland Inventory (NWI) conducted by the United States Fish and Wildlife Service through interpretation of aerial photos and topographic data.
2. Land Cover as mapped by the Michigan Resource Inventory System (MIRIS), Michigan Department of Natural Resources, through interpretation of aerial photographs.
3. Soils as mapped by the United States Department of Agriculture, Natural Resource Conservation Service (NRCS).

This map is not intended to be used to determine the specific locations and jurisdictional boundaries of wetland areas subject to regulation under Part 303, Wetlands Protection, of the Natural Resources and Environmental Protection Act, 1994 PA 451, as amended. Only an on-site evaluation performed by the MDEQ in accordance with Part 303 shall be used for jurisdictional determinations. A permit is required from the MDEQ to conduct certain activities in wetlands regulated under Part 303.

More information regarding this map, including how to obtain a copy can be accessed at [www.michigan.gov/deqwetlands](http://www.michigan.gov/deqwetlands).

### Legend

- Interstate Highways
- US Highways
- State Highways
- Railways
- Open Water
- Rivers
- Drains
- Wetlands as identified on NWI and MIRIS maps
- Soil areas which include wetland soils
- Wetlands as identified on NWI and MIRIS maps and soil areas which include wetland soils
- County Boundary

Areas shown as wetlands, wetland soils, or open water on the map are potential wetlands and deserve further site investigation to verify if wetlands are actually present. This map may not identify all potential wetlands in a county (it may show wetlands that are not actually present and it may not show wetlands which are actually present). This map represents existing information that suggests the probability that a wetland may or may not exist in a given area and cannot be used to identify regulatory jurisdiction.

Compiled by MDEQ October 27, 2006.

